

Self-Contained Compactors

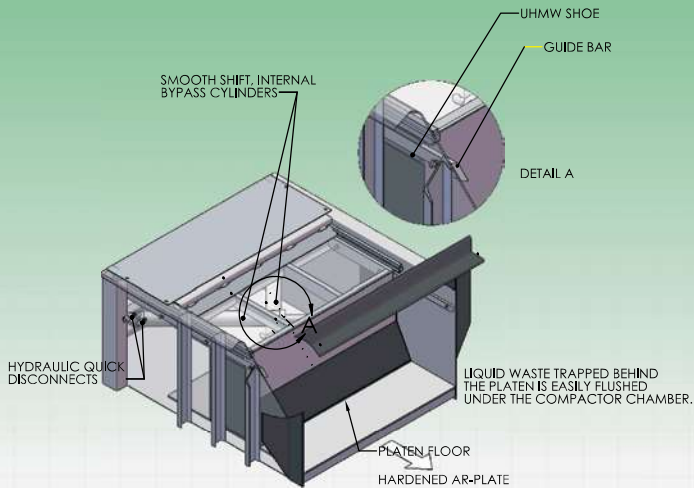


CRAM-A-LOT[®]
J.V. Manufacturing, Inc. 
Solid Waste & Recycling Equipment



“Equipping The World For A Better Environment”

Features



Ram Guide System

The Self-Contained cross cylinder ram features side mounted full length Ultra-High Molecular Weight (UHMW) guides to support the ram providing uncompromising longevity and reliability.

Door Protector

Prevents roll-off hoist cable from contacting the door frame, preventing bent doors and leaking seals.

Lockable Door Latch

Hopper door can be locked preventing unauthorized usage.

Sub Floor Sump

Self-Contained Compactor sub floor is separated from the container floor to form a tunnel to allow liquids to drain from behind the ram when emptying.

Programmable Relay Controls

Self-Contained Compactors by Cram-A-Lot are designed to use a readily available non-proprietary programmable relay.

Single Piece Side Sheet and Floor

Cram-A-lot's manufacturing plant uses a 30 foot 500 ton press break to form sides and floors allowing no vertical seams.

Rear Gate Hinge & Seal

Self-Contained Compactors have a full door seal and a 3 point door latch that provides excellent compression and sealing properties.

Rust Inhibiting Primer

Self-Contained Compactors are primed with rust inhibiting red oxide primer to reduce corrosion.

All Cram-A-Lot compactors conform to all current ANSI Z 245.2 safety standards

All information is subject to engineering and/or other changes without notice.



500 Ton 30 ft Press Break >

< Remote Power Unit



Door Protector >



< Door Latch w/Padlock Hasp



Door Custom Fitted to Container >



< Catch Latch



< Full Door Seal

Rust Inhibiting Primer

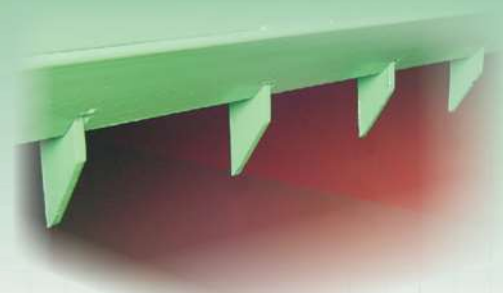
Special Options Available



Remote Controls



Color Coded Pressure Gauge



Hinged Breaker Bar Teeth

Key Operation

All compactors, come with on/off switch as mandated by ANSI Z 245.2 safety standards. Cram-A-lot offers additional options for increased levels of safety.

Color Coded Pressure Gauge

The color coded gauge indicates 50%, 75% and 100% fullness. The gauge is more accurate than fullness lights.

Oil Heater

Ideal for cold climate areas. The oil heater automatically maintains the oil at 70 degrees.

Hinged Breaker Bar Teeth

Hinged breaker bar teeth hold trash in place, preventing trash from springing back into the chamber.

Ozone Odor Neutralizer

Odor neutralizers like the Sonozaire circulate the ozone, permitting it to search out and destroy odor molecules. The result is a clean-smelling area, which does not harbor and protect bacteria ending odor complaints and assuring customer satisfaction.



Oil Heater



Odor Neutralizer

Warranty

Cram-A-Lot® 1-2-3 Warranty

J.V. Manufacturing will furnish without charge:

- 1) All parts and labor expenses through the first year of ownership to remedy any faults proven to be the result of defective materials or workmanship.
- 2) All parts through the second year of ownership to remedy any faults proven to be the result of defective materials or workmanship.
- 3) All labor expenses through the third year of ownership to remedy any structural faults proven to be the result of defective materials or workmanship.

This warranty does not apply to any damage caused by negligence, misuse, modifications, alterations, or accidents by purchaser or third parties. Refer to operation manual for specific warranty coverage.

Standard and Special Applications



Hydraulic Tailgate



**Integral Rear Feed
Cart Dumper**



**Side Load
Through-The-Wall
Break-A-Way Hopper**



**Walk-On
Full Enclosure**



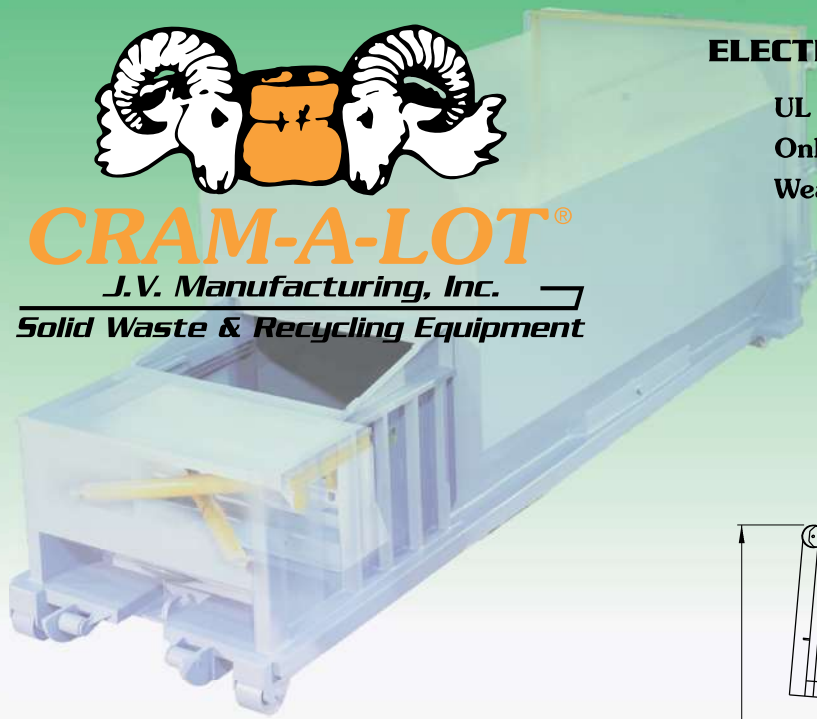
**Rear Load
Through-The-Wall
Break-A-Way Hopper**



CRAM-A-LOT®

J.V. Manufacturing, Inc.

Solid Waste & Recycling Equipment



ELECTRICAL FEATURES ON ALL MODELS

UL Listed Control Panel

Only Major Brand Electrical Components Used

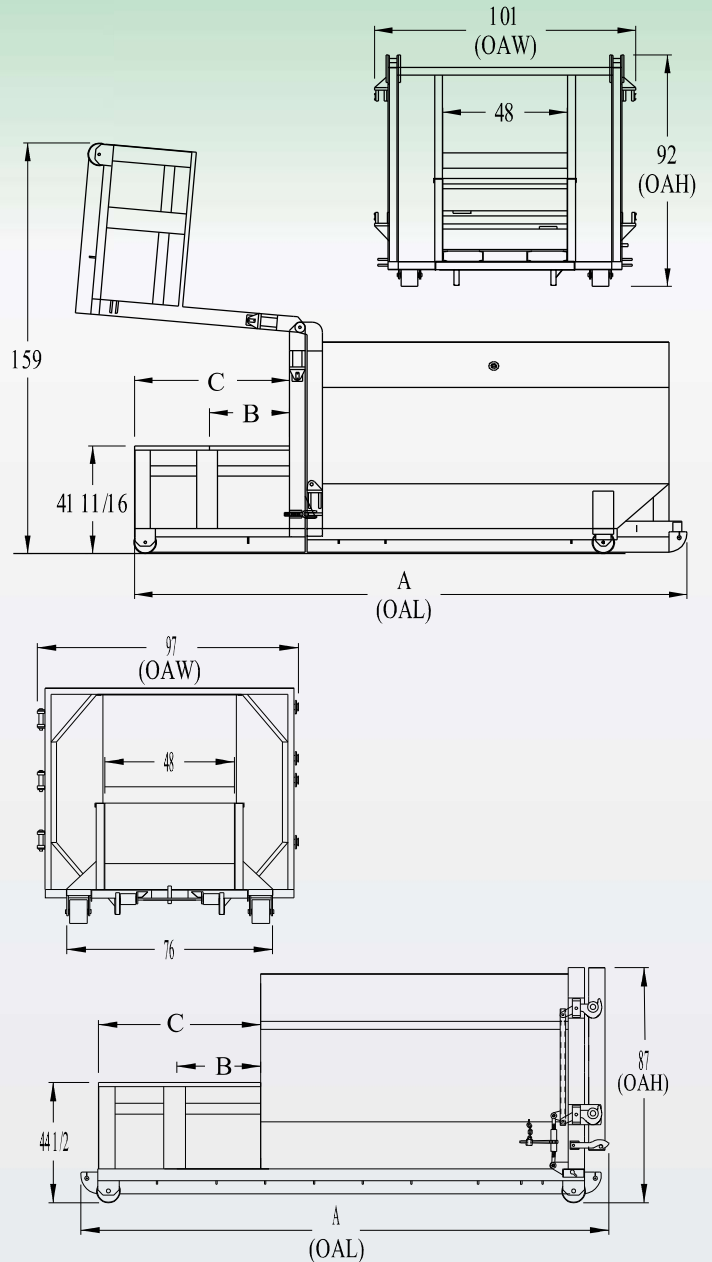
Weather Tight Electrical Enclosure

**ONE YARD
SELF-CONTAINED COMPACTOR**

Specifications

| | SC-T1-10/15/20 | SC-T1-16/20/25-HTG |
|----------------------------------|---|---|
| Charge Box Capacity | 1 Cu Yd | 1 Cu Yd |
| WASTEC Rating | 0.75 Cu Yd | 0.75 Cu Yd |
| Clear Top Opening | 46" | 46" |
| Theoretical Cycle Time | 28 Sec | 28 Sec |
| Total Force | Normal 44,200 lbs Maximum 53,000 lbs | Normal 44,200 lbs Maximum 53,000 lbs |
| Ram Face Pressure | Normal 40.0 Psi Maximum 48.0 Psi | Normal 40.0 Psi Maximum 48.0 Psi |
| Ram Face Dimensions, W X H | 48" x 23" | 48" x 23" |
| Ram Penetration | 6" | 6" |
| Motor - 3Phase - 208/230/460 Vac | 10 Hp | 10 Hp |
| Pump Capacity | 10.5 Gpm | 10.5 Gpm |
| Hydraulic Reservoir Capacity | 22 gal | 22 gal |
| Hydraulic Cylinder | Bore Dia. Two, 4" Stroke 26" Rod Dia. 2" | Bore Dia. Two, 4" Stroke 26" Rod Dia. 2" |
| Operating Pressure | Normal 2000 Psi Maximum 2400 Psi | Normal 2000 Psi Maximum 2400 Psi |

| DIMENSIONS | (A) | (B) | (C) | BASE UNIT WEIGH | NORMAL CONTAINER CAPACITY |
|--------------|-----------------------|------------------------|------------------|-----------------------|---------------------------------|
| | OVER ALL LENGTH | CLEAR TOP LENGTH | PACKER LENGTH | | |
| SC-T1-10 | 13' - 2" | 31" | 60" | 6,500 lbs | 10 CU YD |
| SC-T1-15 | 16' - 6" | 31" | 60" | 7,000 lbs | 15 CU YD |
| SC-T1-20 | 19' - 10" | 31" | 60" | 7,500 lbs | 20 CU YD |
| SC-T1-16-HTG | 18' | 31" | 60" | 8,000 lbs | 16 CU YD |
| SC-T1-20-HTG | 19' 8" | 31" | 60" | 8,200 lbs | 20 CU YD |



** Above drawings are shown with universal understructures. **

Self-Contained Compactors Units can be custom designed and factory installed to suit your special applications

Leasing and Rental Programs Available



CRAM-A-LOT®

J.V. Manufacturing, Inc.

Solid Waste & Recycling Equipment



ELECTRICAL FEATURES ON ALL MODELS

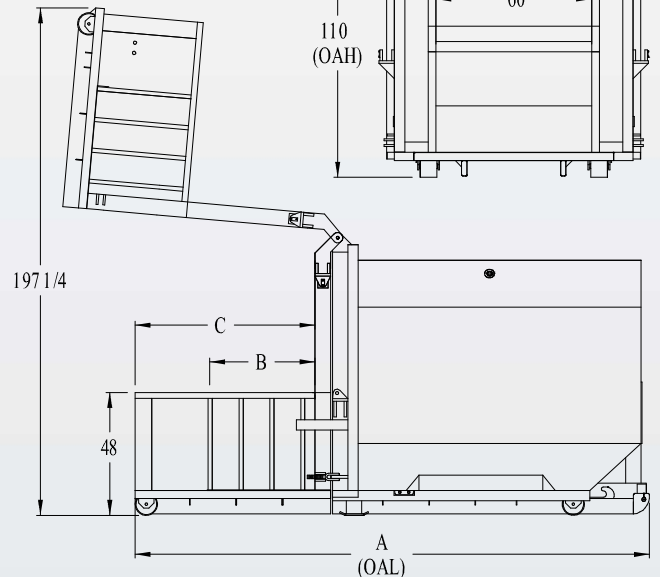
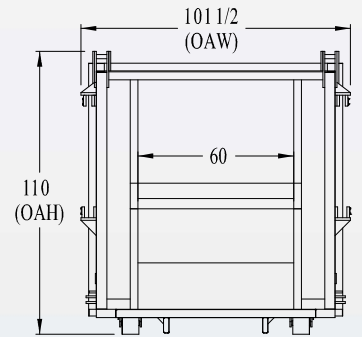
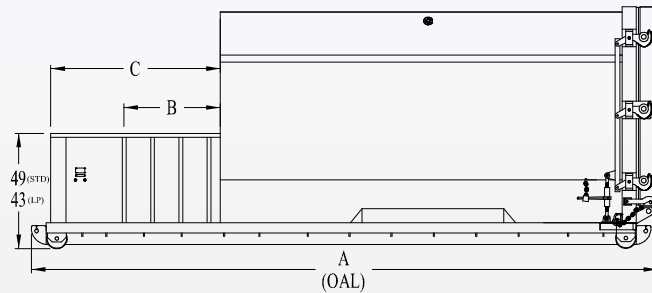
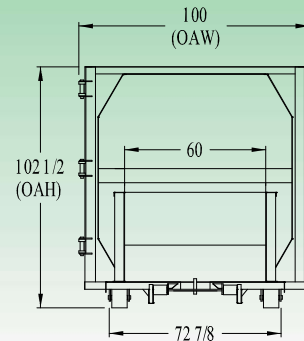
- UL Listed Control Panel
- Only Major Brand Electrical Components Used
- Weather Tight Electrical Enclosure

TWO YARD SELF-CONTAINED COMPACTOR

Specifications

| | SC-T2-20/25/30/34/38 | SC-02-20/25/30/34 | SC-T2-20/25/30/34-HTG |
|----------------------------------|--|--------------------------|--------------------------|
| Charge Box Capacity | 2 Cubic Yard | 2 Cubic Yard | 2 Cubic Yard |
| WASTEC Rating | 1.52 | 1.31 | 1.52 |
| Clear Top Opening | 41" x 58" | 34" x 58" | 41" x 58" |
| Theoretical Cycle Time | 37 Sec | 32 Sec | 37 Sec |
| Total Force | Normal 42,700 lbs Maximum 51,250 lbs | 39,300 lbs 47,100 lbs | 42,700 lbs 51,250 lbs |
| Ram Face Pressure | Normal 24.5 Psi Maximum 29.5 Psi | 22.6 Psi 27.1 Psi | 24.5 Psi 29.5 Psi |
| Ram Face Dimensions, W X H | 60" x 29" | 60" x 29" | 60" x 29" |
| Ram Penetration | 8" | 5.5" | 8" |
| Motor - 3Phase - 208/230/460 Vac | 10 Hp | 10 Hp | 10 Hp |
| Pump Capacity | 10.5 Gpm | 10.5 Gpm | 10.5 Gpm |
| Hydraulic Reservoir Capacity | 22 GAL | 22 Gal | 22 Gal |
| Hydraulic Cylinder | Bore Dia. Two - 4" Stroke 34" Rod Dia. 2" | 5" 40" 3" | Two - 4" 34" 2" |
| Operating Pressure | Normal 2000 Psi Maximum 2400 Psi | 2000 Psi 2400 Psi | 2000 Psi 2400 Psi |

| DIMENSIONS | (A) | (B) | (C) | BASE UNIT WEIGHT | NORMAL CONTAINER CAPACITY |
|--------------|-----------------|------------------|---------------|------------------|---------------------------|
| | OVER ALL LENGTH | CLEAR TOP LENGTH | PACKER LENGTH | | |
| SC-T2-20 | 17' 4" | 41" | 71" | 9800 lbs | 20 CU YD |
| SC-T2-25 | 19' - 11" | 41" | 71" | 10,000 lbs | 25 CU YD |
| SC-T2-30 | 22' - 1" | 41" | 71" | 10,800 lbs | 30 CU YD |
| SC-T2-34 | 23' 9" | 41" | 71" | 10,900 lbs | 34 CU YD |
| SC-T2-38 | 25' - 10" | 41" | 71" | 12,000 lbs | 38 CU YD |
| SC-02-20 | 19' | 34" | 90 1/2" | 9,860 lbs | 20 CU YD |
| SC-02-25 | 21' - 7" | 34" | 90 1/2" | 10,100 lbs | 25 CU YD |
| SC-02-30 | 23' - 9" | 34" | 90 1/2" | 10,800 lbs | 30 CU YD |
| SC-02-34 | 25' - 5" | 34" | 90 1/2" | 10,900 lbs | 34 CU YD |
| SC-T2-20-HTG | 17" | 41" | 71" | 10,260 lbs | 20 CU YD |
| SC-T2-25-HTG | 19' - 8" | 41" | 71" | 10,900 lbs | 25 CU YD |
| SC-T2-30-HTG | 21' 9" | 41" | 71" | 11,540 lbs | 30 CU YD |



** Above drawings are shown with universal understructures. **

CORPORATE CRAM-A-LOT® CENTRAL CRAM-A-LOT® WEST DISTRIBUTED BY:

701 Butterfield Coach Road
P.O. Box 229
Springdale, AR 72765
1-800-678-7320
479-751-7320
479-751-7774 (fax)

108 Hwy 365 S.
Conway, AR 72032
1-800-653-6780
501-327-6560
501-329-7931 (fax)

8501 Weyand Ave.
Sacramento, CA 95828
1-888-431-3094
916-381-1600
916-381-6400 (fax)